

Customer Hosted RELAIS Express V2009 TECHNICAL REQUIREMENTS Revised October 29, 2009

The following document outlines basic technical requirements needed to run Relais Express. Relais Express should be installed on servers / workstations with the following hardware. Note that increasing/decreasing this hardware will improve/degrade performance.

Relais Express is a scanning and delivery software solution.
Relais Express PLUS allows you to use Relais Express on a network.

1. Relais Express Workstation for Scanning

Operating System	2000 /XP*	
	Recommended *	Minimum **
CPU	2GHz	1GHz
RAM	512MB	256MB
HDD	50GB	25GB

You can run Relais Express PLUS either from a network server to the clients, or make one of the clients act as the server. Use the Windows File Sharing. If one of the clients is being used as the server, then create a mapping back to that client.

2. Scanners

If a scanner is not purchased from Relais International, make sure there is a Twain or Kofax compatible driver available for the scanner. In the case of a Twain driver, the Relais Scanning software opens the scanner's driver interface.

Relais also supports Bookeye scanners and the Zeutschel OS 12000 Scanner.

3. General Notes

*** 2000 --> Windows 2000 SP4

XP --> Windows XP SP3

2003 --> Windows 2003 SP1

1. Relais International does not supply or license any operating systems.
2. Relais International will supply a run time license for Microsoft SQL Server Desktop Engine (MSDE) database if appropriate.

4. Web Browser Compatibility

Secure Post to Web with...	IE6	IE7	*Firefox 1.5+2	Netscape 8+9
Adobe Reader 5	Yes	No	Yes	Yes
Adobe Reader 6	Yes	No	Yes	Yes
Adobe Reader 7	Yes	Yes	Yes	Yes
Adobe Reader 8	Yes	Yes	Yes	Yes
Adobe Reader 9	Yes	Yes	Yes	Yes

*There have been some issues with Firefox and the new security. The reasons are undetermined as of yet.

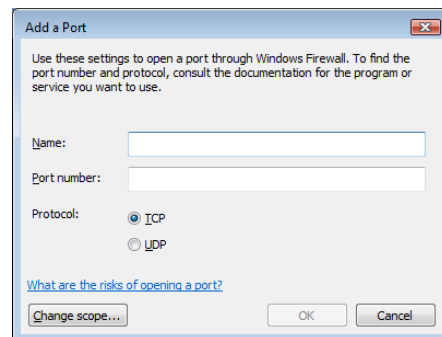
5. Adobe Acrobat

Adobe Acrobat must be installed on each workstation or server running the electronic delivery applications (Delivery Email, Delivery FTP & Delivery Fax Server) to permit conversion of TIFF and PDF images as required.

6. Relais Express External Firewall Usage

Ensure the following TCP/IP ports are allowed through the firewall. If they are not...

- Go to the Windows Firewall, found in the Control Panel.
- Select the Exceptions tab.
- Click **Add Port**. Name the port and enter a port number.
- Leave the default Protocol selection as TCP.
- Click **OK**.
- You will need the ports listed below to be opened to make a database connection.
- When you are sure all ports have been added, click **OK** again to exit.



Port #	Description
25	Used by many Relais applications to send out e-mail messages via SMTP. For example, Delivery Email as well as sending various notices and message re errors to the administrator.
80	Used by patrons when entering requests via the Relais web forms or to retrieve Post to Web documents when posted to an HTTP server. Used by the Relais web client for staff.
419	Used by <u>Delivery FTP</u> to send documents to Ariel.
422	Used by <u>Received FTP</u> to receive documents from Ariel.
7968	7968 is used by <u>Delivery FTP</u> and <u>Receive FTP</u> to send documents to and receive documents from Odyssey.

7. Relais File Permissions

Ensure the appropriate file permissions are set for the following directories and files.

Relais directories except Reports	Read
	Write
Reports directory	Read
In the Relais root directory:	
*.exe	Read
	Execute
*.ini	Read
	Write
*.txt	Read
	Write

Once your initial configuration is done and depending on local security requirements, the file permissions for some of these directories and folders may be modified.

8. Security

- Software security is provided by the Windows network on which Relais is running.
- Relais applications are secured through Windows file sharing and possibly your VPN, if you have one.
- The Relais database can be secured if you provide the secure ODBC connection.
- Security for web components (i.e. HTTP, SMTP, POP) are managed by the web server (i.e. Windows, Linux/UNIX).
- Hardware security is provided by your own switches, routers, firewalls, etc. on which the Relais system is running.